



# IPN EHS550

Operation Manual

## **Contents:**

- 1. Product description**
- 2. Setup**
- 3. Operation**

## **Contents:**

- IPN EHS Box**
- Ringer Sensor**
- Cable A – RJ45 to RJ45 (Blue)**
- Cable C – RJ9 to RJ9 Cable**
- Cable D – RJ45 to RJ45 Siemens DHSG Cable**
- Cable E – Polycom Cable**
- Cable F – Alcatel Cable**
- Cable G – Panasonic Cable**
- Cable H – RJ11 Stub Cable**

## **1. Product description**

The IPN EHS Headset Connection box is designed to work in conjunction with the W860 and W880 Wireless Headsets and offers remote operation with a wide range of desk telephones, eliminating the need for a mechanical handset lifter.

This offers you the freedom to move around the office but still be able to monitor the telephone for incoming calls and answer the call while you are away from your desk.

## **2. Setup**

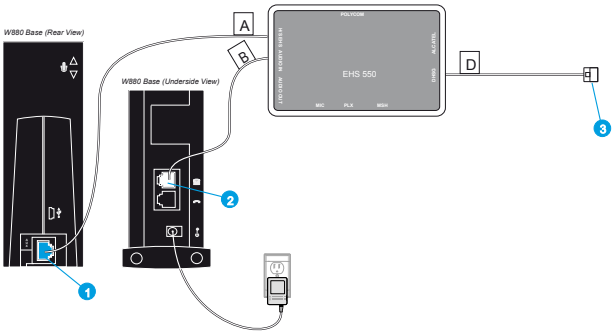
The IPN EHS Headset Connection Box is compatible with desk telephones from the following manufacturers:

- 2.1 Aastra
- 2.2 Alcatel
- 2.3 Avaya
- 2.4 Siemens (DHSG)
- 2.5 Toshiba
- 2.6 Polycom
- 2.7 Panasonic

# Connecting the EHS Box to your Desk Telephone

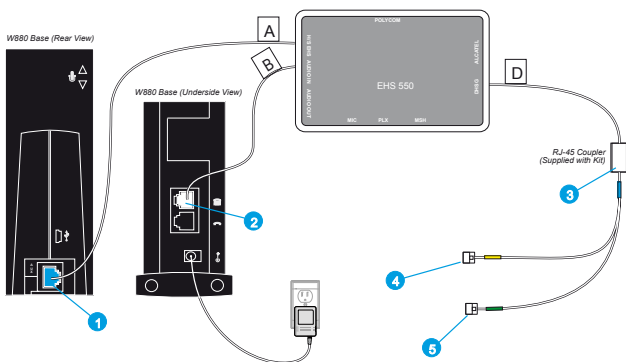
## 2.1 Aastra

(With the exception of models 6735i, 6737i, 6753i, 6755i and 6757i)



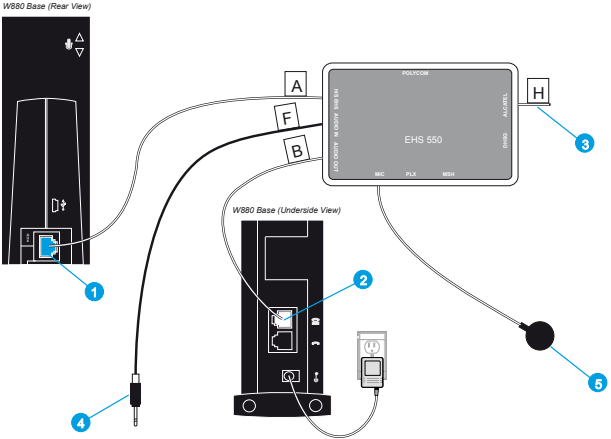
1. Insert the Blue plug on cable A into the AUX port at the back of your W860/W880 headset base. Insert the clear plug on cable A into the H/S EHS port on your EHS box.
2. Connect cable B (supplied with your headset) into the TEL port on the bottom of your W860/W880 headset base and the other end into the 'Audio In' port on the EHS box.
3. Connect cable D to the 'DHSG' port of your EHS box and the other end to the Expansion module port of your Aastra telephone

For models Aastra 6735i, 6737i, 6753i, 6755i and 6757i only - Aastra DHSG cable kit required - available from your Aastra reseller.



1. Insert the Blue plug on cable A into the AUX port at the back of your W860/W880 headset base. Insert the clear plug on cable A into the H/S EHS port on your EHS box.
2. Connect cable B (supplied with your headset) into the TEL port on the bottom of your W860/W880 headset base and the other end into the 'Audio In' port on the EHS box.
3. Connect cable D to the 'DHSG' port of your EHS box and the other end to the RJ-45 Coupler (supplied with the Aastra cable kit). Connect the **blue** end of the Aastra DHSG cable to the other side of the coupler.
4. Connect the **yellow** connector to the expansion module port on the back of your telephone.
5. Connect the **green** connector to the headset port of your telephone.
6. Set the Audio Mode to Headset/Speaker on your phone. (Options->Preferences->Set Audio->Audio Mode->Headset/Speaker).
7. For full headset functionality, disable the "Goodbye Key Cancels Incoming Call" parameter. (Aastra Web UI, Basic Settings ->Preferences->General).

## 2.2 Alcatel

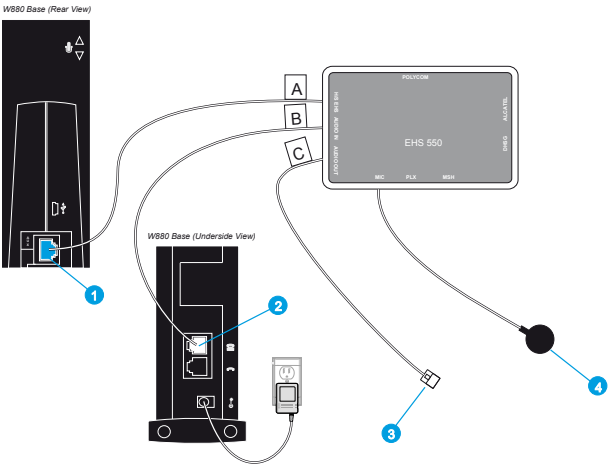


1. Insert the Blue plug on cable A into the AUX port at the back of your W860/W880 headset base. Insert the clear plug on cable A into the H/S EHS port on your EHS box.
2. Connect cable B (supplied with your headset) into the TEL port on the bottom of your W860/W880 headset base and the other end into the 'Audio Out' port on the EHS box.
3. Connect cable H to the 'Alcatel' socket on the EHS Box.
4. Connect the RJ9 plug on cable F to the 'Audio In' port of your EHS box and the 3.5mm Plug on cable F to the telephone's H/S port.
5. Connect the Ringer Sensor supplied with the EHS Box to the 'MIC' port on the EHS box and place the sensor as close as possible to the ringer sound outlet on your telephone.

## 2.3 Avaya

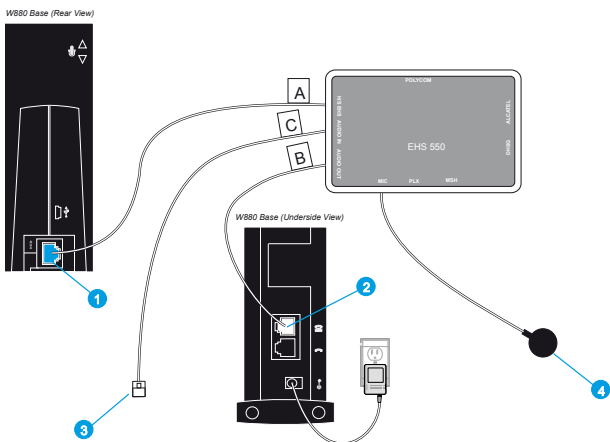
There are two connection methods for the Avaya range of telephones. Where the 'reversed' method is required, this is indicated in the compatibility list.

### *Avaya Standard*



1. Insert the Blue plug on cable A into the AUX port at the back of your W860/W880 headset base. Insert the clear plug on cable A into the H/S EHS port on your EHS box.
2. Connect cable B (supplied with your headset) into the TEL port on the bottom of your W860/W880 headset base and the other end into the 'Audio In' port on the EHS box.
3. Connect cable C to the 'Audio Out' port of your EHS box and the other end to the headset port of your Avaya telephone.
4. Connect the Ringer Sensor supplied with the EHS Box to the 'MIC' port on the EHS box and place the sensor as close as possible to the ringer sound outlet on your telephone.

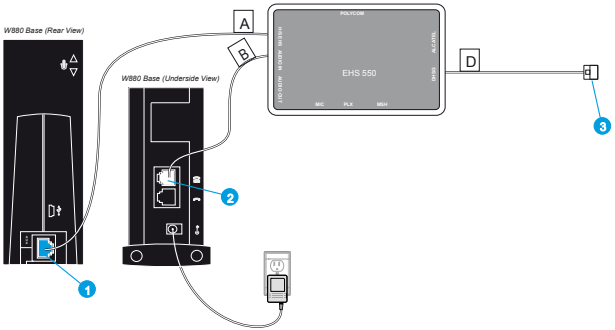
## Avaya Reversed



1. Insert the Blue plug on cable A into the AUX port at the back of your W860/W880 headset base. Insert the clear plug on cable A into the H/S EHS port on your EHS box.
2. Connect cable B (supplied with your headset) into the TEL port on the bottom of your W860/W880 headset base and the other end into the 'Audio Out' port on the EHS box.
3. Connect cable C to the 'Audio In' port of your EHS box and the other end to the headset port of your Avaya telephone.
4. Connect the Ringer Sensor supplied with the EHS Box to the 'MIC' port on the EHS box and place the sensor as close as possible to the ringer sound outlet on your telephone.

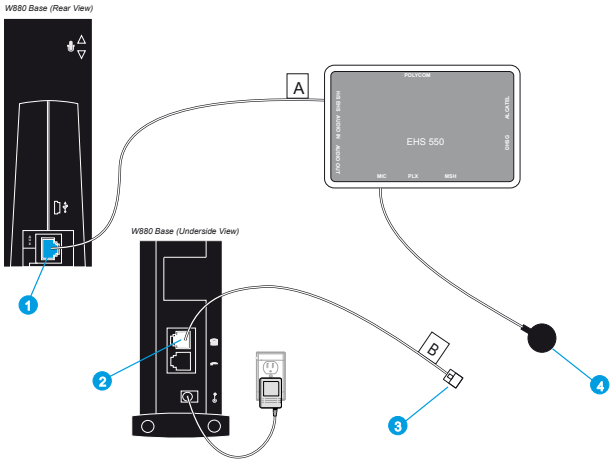


## 2.4 Siemens



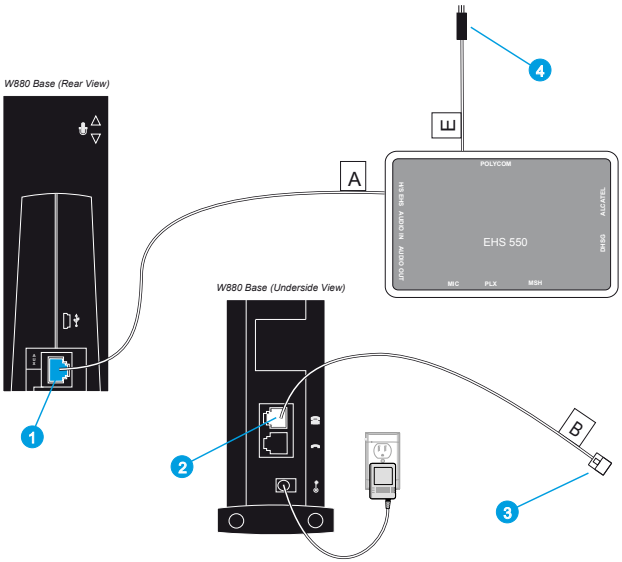
1. Insert the Blue plug on cable A into the AUX port at the back of your W860/W880 headset base. Insert the clear plug on cable A into the H/S EHS port on your EHS box.
2. Connect cable B (supplied with your headset) into the TEL port on the bottom of your W860/W880 headset base and the other end into the 'Audio In' port on the EHS box.
3. Connect cable D to the 'DHSG' port of your EHS box and the other end to the 'AUX' port of your Siemens telephone.
4. Reset the Siemens telephone before using the headset.

## 2.5 Toshiba



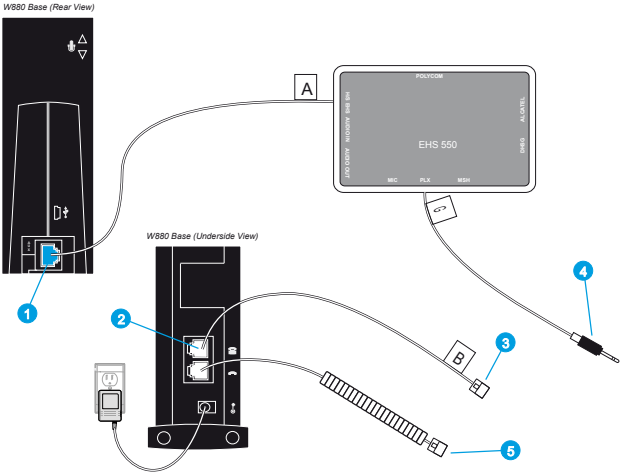
1. Insert the Blue plug on cable A into the AUX port at the back of your W860/W880 headset base. Insert the clear plug on cable A into the H/S EHS port on your EHS box.
2. Connect cable B (supplied with your headset) into the TEL port on the bottom of your W860/W880 headset base and the other end into the 'Headset' port on your Toshiba telephone.
3. Connect the Ringer Sensor supplied with the EHS Box to the 'MIC' port on the EHS box and place the sensor as close as possible to the ringer sound outlet on your telephone.

## 2.6 Polycom



1. Insert the Blue plug on cable A into the AUX port at the back of your W860/W880 headset base. Insert the clear plug on cable A into the H/S EHS port on your EHS box.
2. Connect cable B (supplied with your headset) into the TEL port on the bottom of your W860/W880 headset base.
3. Connect the other end of cable B into the 'Headset' port on your Polycom telephone.
4. Connect cable E to the 'Polycom' port on the EHS Box and the other end to the 'AUX' port on the bottom of your Polycom telephone.
5. The telephone now needs to be set to 'Jabra DSHG' mode:
  - Press 'Menu'
  - Select: Settings>Basic>Preferences>Headset>Analog Headset
  - Press the select key to activate 'Jabra DSHG' mode

## 2.7 Panasonic



1. Insert the Blue plug on cable A into the AUX port at the back of your W860/W880 headset base. Insert the clear plug on cable A into the H/S EHS port on your EHS box.
2. Connect cable B (supplied with your headset) into the TEL port on the bottom of your W860/W880 headset base.
3. Connect the other end of cable B into the 'Handset' port of the Panasonic telephone.
4. Connect cable G to the 'PLX' port of your EHS box and the other end to the 'EHS' port of your Panasonic telephone.
5. Plug the Panasonic telephone handset cable from the telephone base and plug into the 'Handset' port on the bottom of the W860/W880 base.

### **3. Operation**

Once your EHS box has been connected correctly to your telephone, you will be able to remotely control your telephone with the button on your W860/W880 headset to both answer and end calls. When you are away from your desk you will also be able to hear a signal on the headset to alert you when the telephone is ringing.

## Health and safety instructions

Please read the following safety and operational instructions before using your IPN Headsets product. Please keep these instructions for your reference. When using this product, these basic safety precautions and warnings should be followed to reduce the risk of fire, electric shock, injury to persons and damage to property.

### General

Operating, charging and storage temperature is 0°C to 40°C (32°F to 104°F).

### Warnings

- CHILDREN. Never allow children to play with the product – small parts may be a choking hazard.
- Do not insert anything into the product because this may cause damage to the internal components or cause injury to you.
- Avoid contact with liquids. Do not locate this product near water, for example, near a bathtub, or sink, in a wet basement, or near a swimming pool.
- Discontinue use of product and contact IPN Headsets if the product overheats, has a damaged cord or plug, if the product has been dropped or damaged, or if the product has come into contact with liquids.
- This product should never be placed over or near a heat register and should not be placed in locations which do not have proper ventilation.



CB

