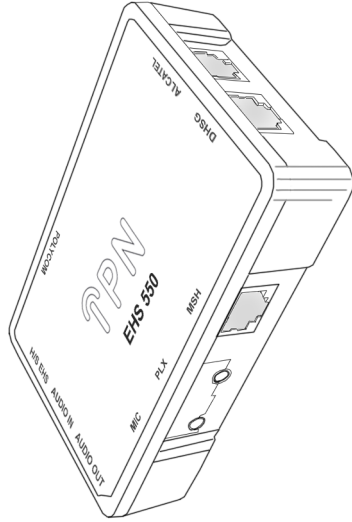


IPN EHS 550 DECT Connection Box

SET-UP GUIDE



For use with Siemens deskphones

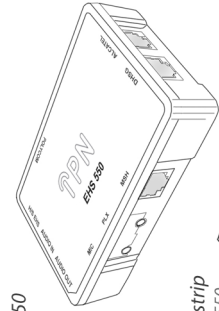
What's in the box:

IPN EHS 550

Cable A



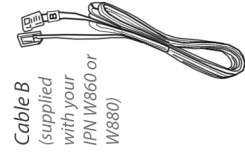
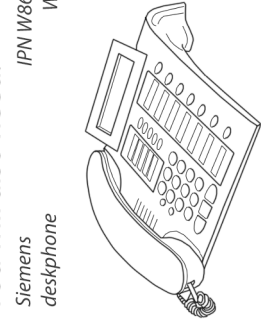
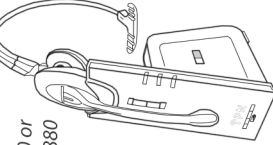
Cable D



Adhesive strip
(to fix EHS 550
to your desk)

You will also need:

IPN W860 or
W880



Cable B
(supplied
with your
IPN W860 or
W880)

Compatibility guide:

The IPN EHS 550 is compatible with the following Siemens models:

- Openstage 30
- Openstage 40
- Openstage 60
- Openstage 80
- Optipoint 410
- Optipoint 420
- Optipoint 500
- Optipoint 600

Other manufacturers:

Other versions of this product are available for the following manufacturers:



Aastra



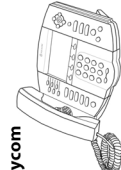
Alcatel



Avaya



Panasonic



Polycom

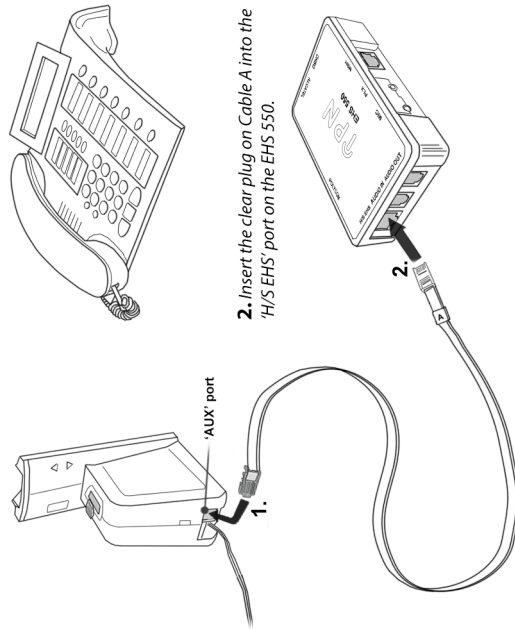


Toshiba

To check which handsets from each manufacturer are compatible, please contact our sales team by email: sales@ipn-headsets.com

Step 1: Connect Cable A

1. Insert the blue plug on Cable A into the 'AUX' port on the back of the W860/W880 base unit.

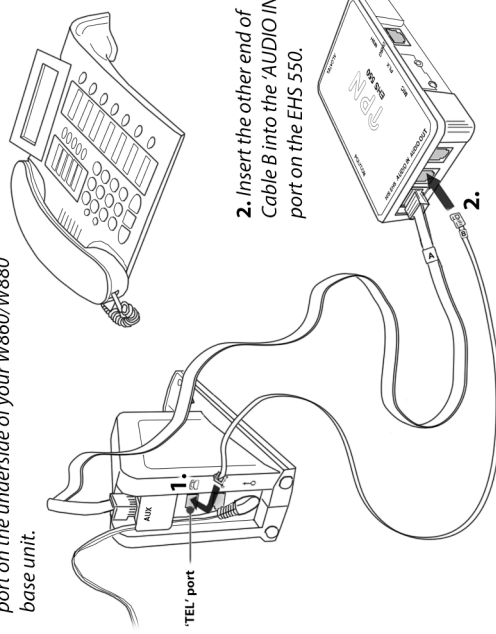


2. Insert the clear plug on Cable A into the 'H/S EHS' port on the EHS 550.

Step 2: Connect Cable B

Cable B is supplied with your IPN W860 or W880.

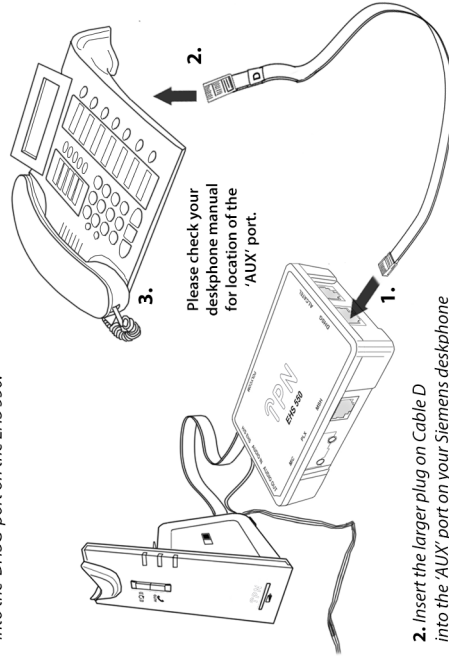
1. Insert either end of Cable B into the 'TEL' port on the underside of your W860/W880 base unit.



2. Insert the other end of Cable B into the 'AUDIO IN' port on the EHS 550.

Step 3: Connect Cable D

1. Insert the smaller plug on Cable D into the 'DHSG' port on the EHS 550.



Please check your deskphone manual for location of the 'AUX' port.

2. Insert the larger plug on Cable D into the 'AUX' port on your Siemens deskphone

3. Ensure you reset your Siemens deskphone before using the EHS 550.

Your EHS 550 will now be ready for use with your IPN W860 or W880 and Siemens deskphone. If you encounter any problems setting up or operating your products, please call our IPN Headsets on 0031 (0)24 34 34 747.